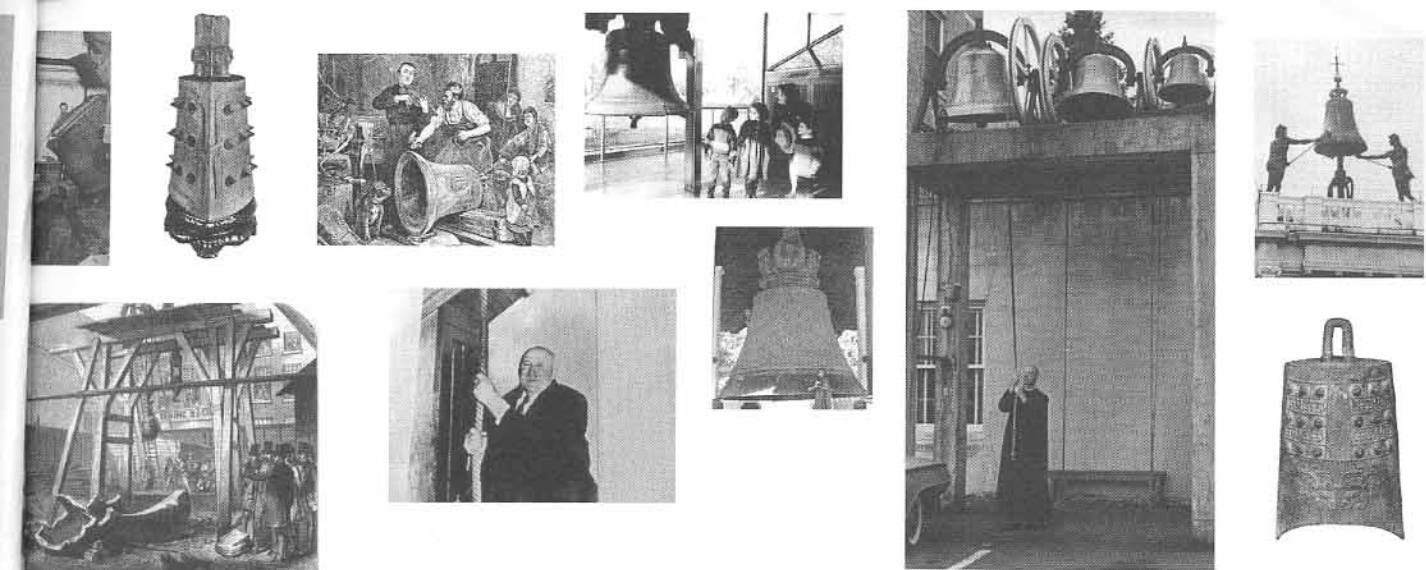
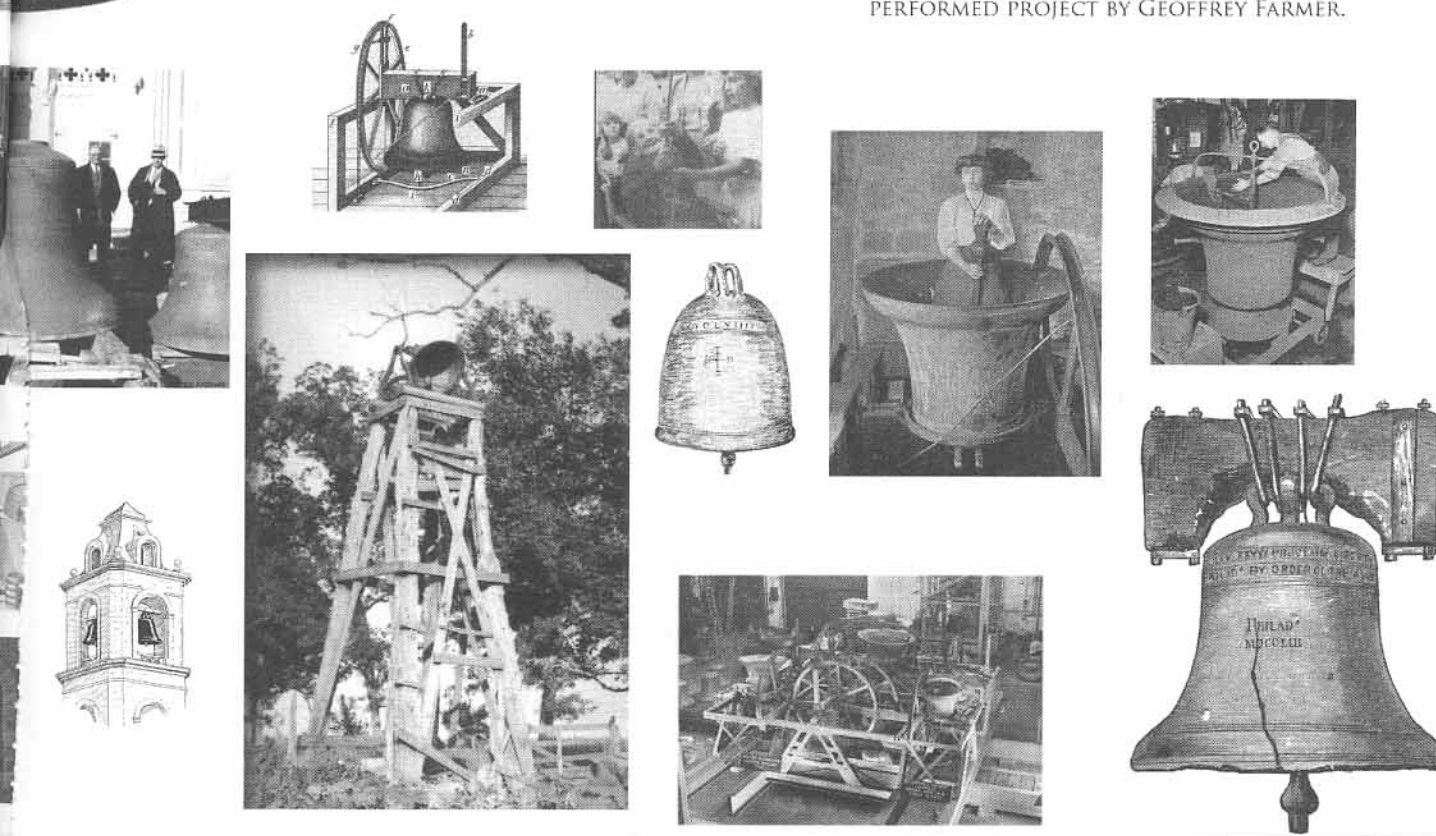


GEOFFREY FARMER



WHEN THE WHEEL TURNS, WHY DOES A POT EMERGE?

A TEN PAGE PICTORIAL PRESENTATION OF A
PERFORMED PROJECT BY GEOFFREY FARMER.



GEOFFREY.

I AM SORRY, BUT IT LOOKS LIKE WE WILL BE UNABLE TO BURY THE BELL. THE WORD WE GOT BACK IS THAT THERE IS NOT ENOUGH SOIL DEPTH FOR AN UNDERGROUND CHAMBER. APPARENTLY THERE IS A COLLAPSED PARKING LOT THERE BURIED UNDERNEATH THE GRASS. WOULD YOU CONSIDER PUTTING THE BELL IN A FOREST LIKE WE DISCUSSED LAST WEEK?

SOME GOOD NEWS IS THAT YOUR ROOM HAS A VIEW OF ST. PAUL'S CATHEDRAL.

BEST,

V

DEAR P,

THANKS FOR THE INFORMATION YOU SENT LAST WEEK. I AM LOOKING TO HAVE A BELL MADE THAT IS LIGHT ENOUGH TO CARRY, BUT LOUD ENOUGH TO BE HEARD FROM SOME DISTANCE, AT LEAST A MILE. I CAN CARRY JUST ABOUT 80 LBS IN MY ARMS.

I WAS ALSO HOPING THAT YOU COULD TAKE A FEW PICTURES OF THE CASTING PROCESS AND IF YOU MIGHT HAVE ANY IMAGES THAT YOU COULD SEND ME OF THE LIBERTY BELL OR OF ANY OTHER BELLS THAT THE WHITECHAPEL FOUNDRY HAS MADE, LIKE BIG BEN OR THE GREAT BELL OF MONTREAL?

THIS WOULD BE VERY MUCH APPRECIATED.

YOURS TRULY,

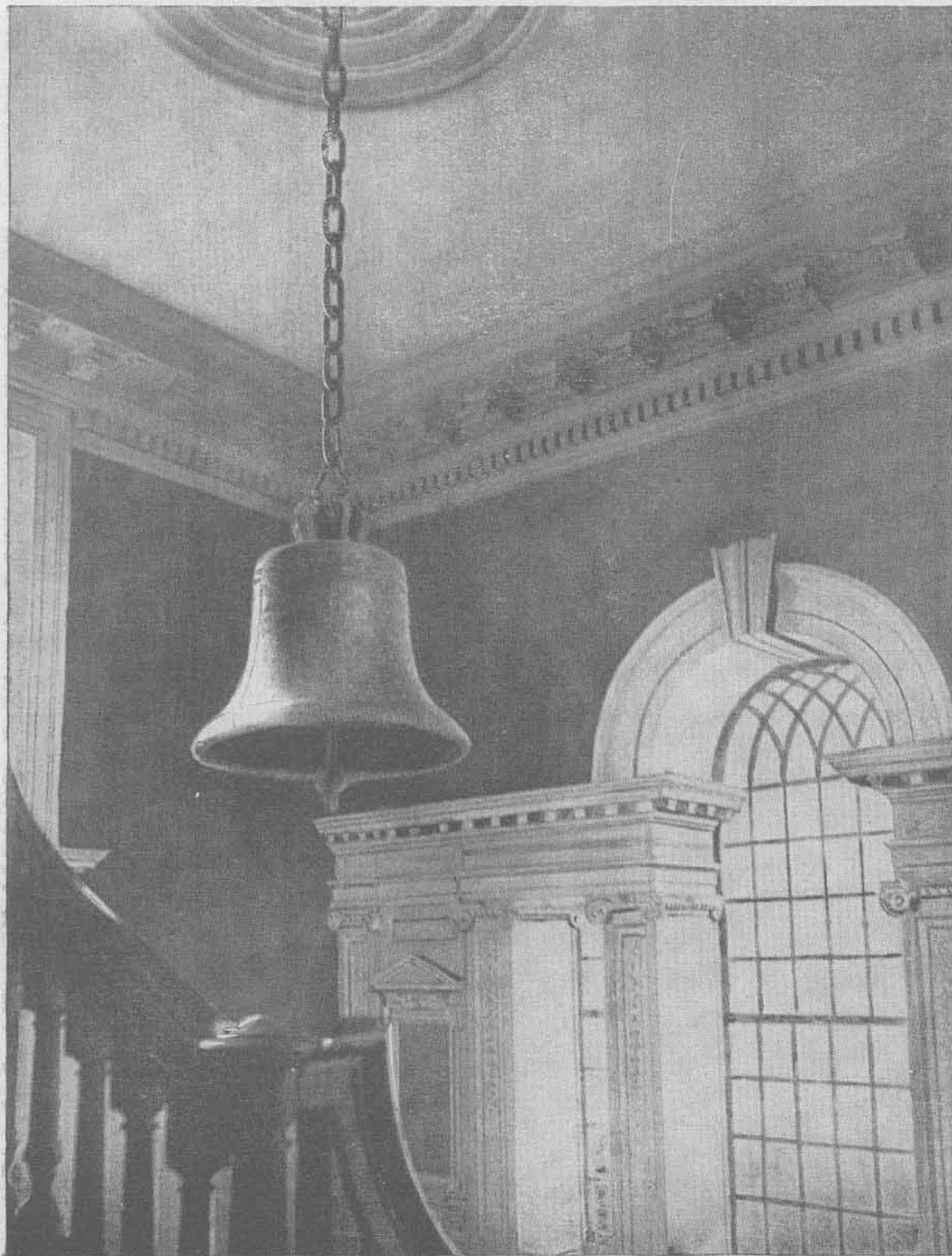
GEOFFREY FARMER

GEOFFREY.

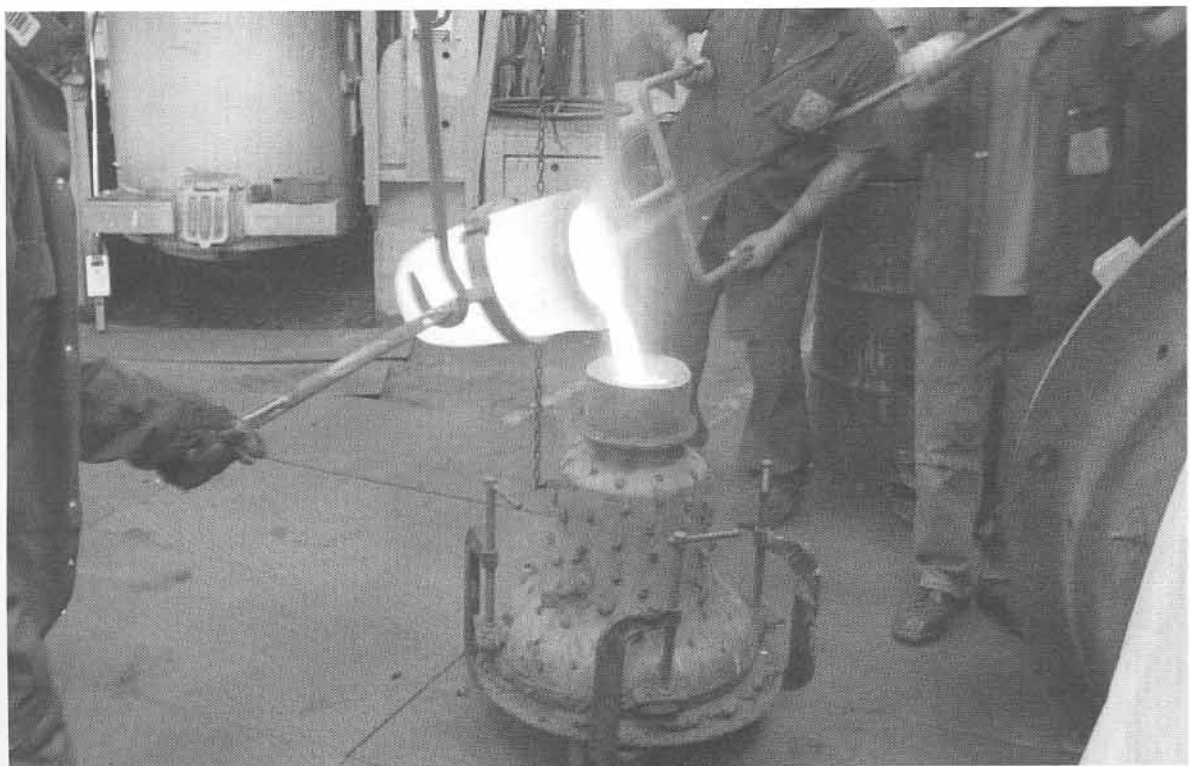
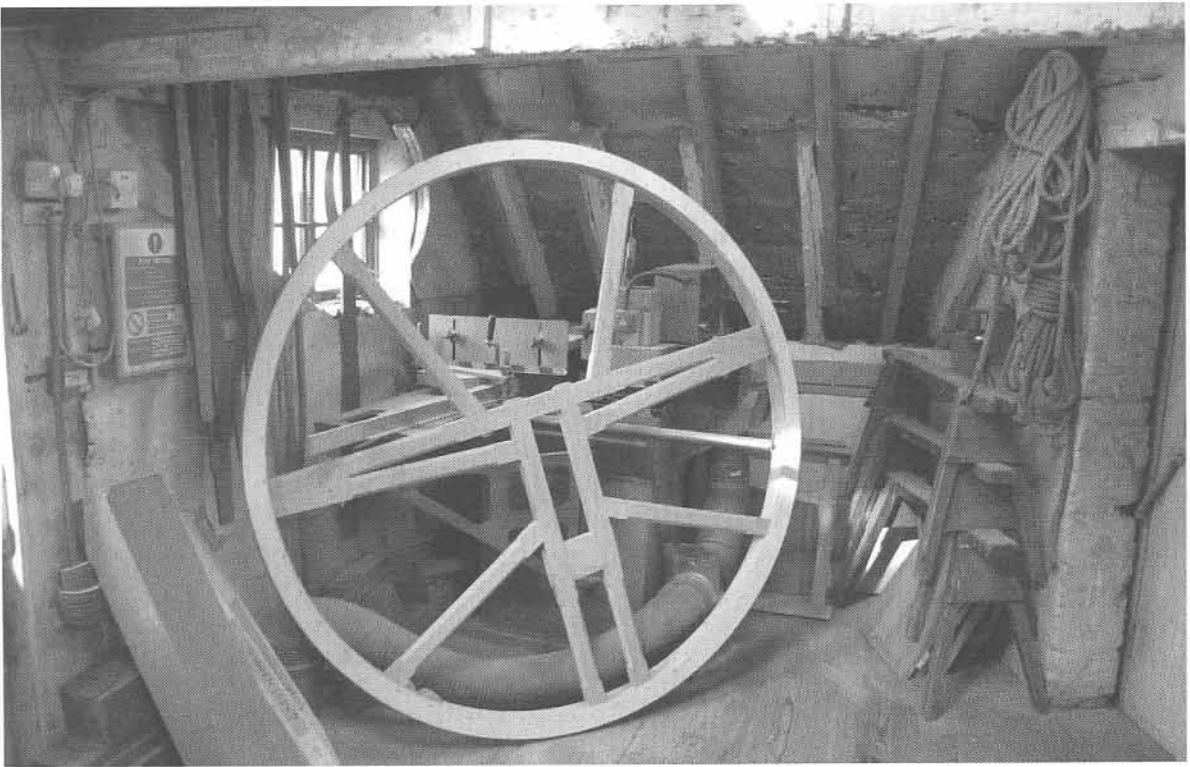
I HEARD THAT YOU WERE LOOKING FOR A FOREST?! I JUST HAPPENED TO BE TALKING TO K. AND SHE MENTIONED YOUR PROJECT. I KNOW SOMEONE IN EXETER WHO RUNS THE CENTRE FOR CONTEMPORARY ART AND THE NATURAL WORLD. I THINK YOU SHOULD CONTACT THEM, AS THEY MIGHT BE ABLE TO HELP YOU OUT. THEIR CENTRE IS IN A FOREST, I PLAYED A CONCERT FOR THEM LAST SUMMER, THEY ARE REALLY GREAT AND IT IS REALLY BEAUTIFUL. HERE IS A LINK TO THEIR WEBSITE: [HTTP://WWW.CCANW.CO.UK](http://www.ccanw.co.uk)

LET ME KNOW WHAT YOU THINK. I CAN CONTACT THEM IF YOU WOULD LIKE...

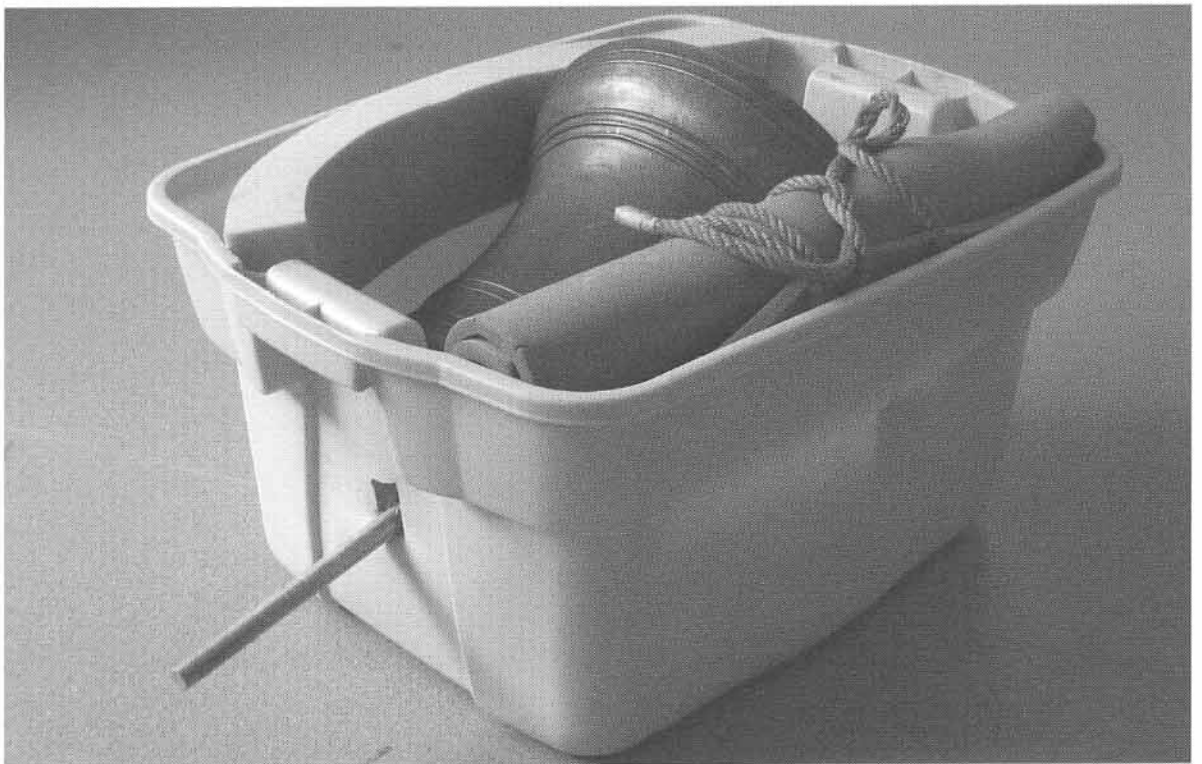
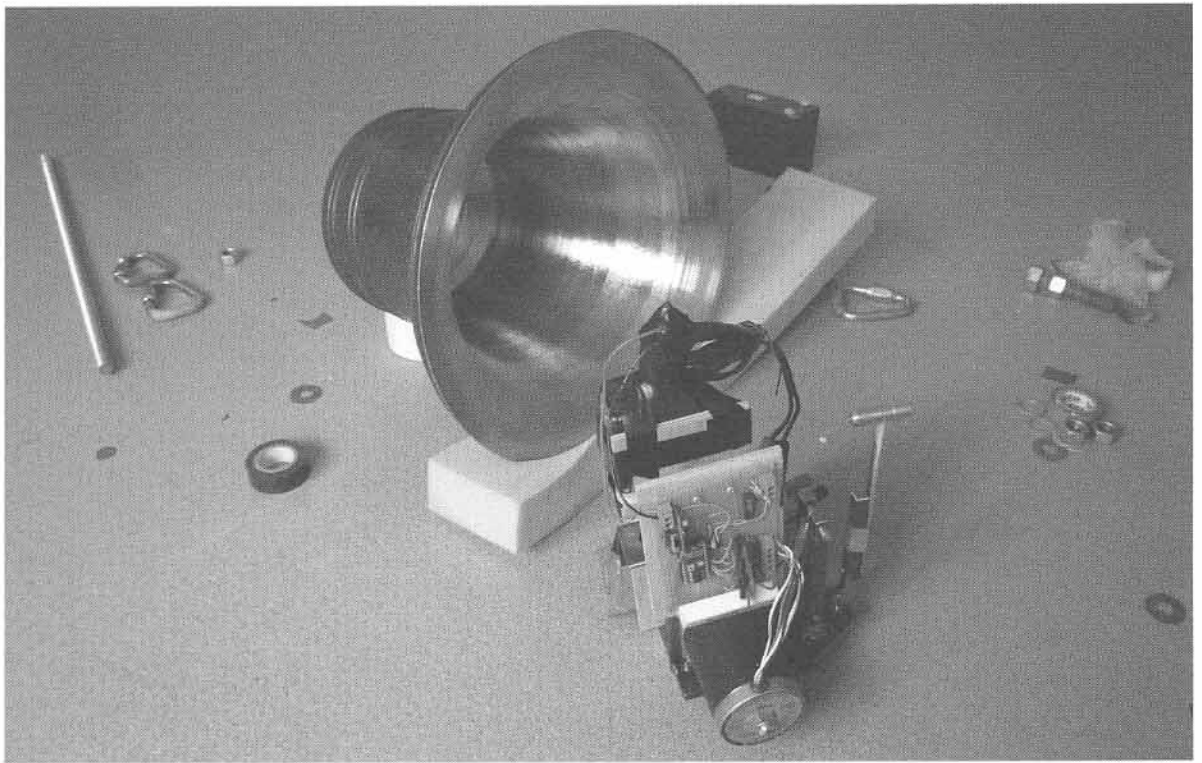
M.



OLD INDEPENDENCE OR LIBERTY BELL, PHILADELPHIA.



Burke, Gregory and Christine Davis. "Geoffrey Farmer: When the Wheel Turns, Why Does a Pot Emerge?"
Public. 38: Projects for a Small World. Toronto: Public Access, 2008. [13].



Burke, Gregory and Christine Davis. "Geoffrey Farmer: When the Wheel Turns, Why Does a Pot Emerge?"
Public. 38: Projects for a Small World. Toronto: Public Access, 2008. [13].

DEAR GEOFFREY,

WE HAVE FOUND YOU AN ARBORIST. HIS NAME IS HARVEY AND IS WELL KNOWN HERE. HE WORKS FOR THE FOREST COMMISSION. HE WAS ABLE TO CLIMB THE TREE YOU CHOSE ON YOUR VISIT HERE TO TEST MOBILE PHONE RECEPTION, WHICH HE SAID WAS QUITE GOOD. 3 BARS.

WE HAVE FOUND A FARM WHERE YOU CAN SET UP YOUR TENT, AND HAVE SOME BIKES FOR YOU TO USE.

LOOK FORWARD TO SEEING YOU IN OCTOBER.

C

T.

THANKS FOR THE INFORMATION. I FOUND OUT THAT WE DO HAVE CELL PHONE RECEPTION. COULD YOU SEND ME THAT LINK AGAIN? I HAVE ONE DIAGRAM THAT I FOUND FOR A DEVICE, BUT IT LOOKS COMPLICATED. THE ONE THAT YOU WERE TALKING ABOUT SEEMS SO MUCH SIMPLER. DO YOU THINK THERE WOULD BE A PROBLEM BRINGING THE DEVICE INTO THE COUNTRY? I AM A BIT WORRIED AFTER THE BOMBINGS IN LONDON. PERHAPS THEY WILL BE SIMPLE ENOUGH AND I CAN MAKE THEM THERE. I STILL HAVE TO CREATE A STRUCTURE TO ACTIVATE THE PHONE TO RING IN THE GALLERY, WHICH WILL THEN RING THE BELL IN THE FOREST. DO YOU THINK M. COULD HELP ME WITH THIS?

BEST,

GEOFFREY

DEAR J,

I AM GOING TO RING THE BELL ON THE DAY VICTOR HUGO WROTE HIS SECOND PREFACE TO NOTRE DAME DE PARIS, IN WHICH HE STATES THAT A WORK OF ART CAN'T BE ADDED TO. (HE LOST TWO CHAPTERS, AND WHEN THEY WERE FOUND, THEY PRINTED A NEW EDITION) THE BELL WILL BE RUNG ONE MINUTE AFTER 7. B. WILL BE STANDING AT BIG BEN. HE WILL SHINE A FLASHLIGHT TO P. WHO WILL THEN CALL F. WHO WILL THEN BANG ON A POT AND SIGNAL A. WHO WILL SHINE A LIGHT TO ME ACROSS THE THAMES. I WILL PULL THE ROPE IN THE GALLERY TRIGGERING THE DEVICE, WHICH WILL CALL THE BELL TO RING IN THE FOREST TRANSFORMING IT INTO A POT. THE POT WILL BE BROUGHT BACK TO THE GALLERY TO SIT NEXT TO THE TOWER.

I WILL SEND A MORE DETAILED DESCRIPTION IN A FEW DAYS.

G



Burke, Gregory and Christine Davis. "Geoffrey Farmer: When the Wheel Turns, Why Does a Pot Emerge?"
Public. 38: Projects for a Small World. Toronto: Public Access, 2008. [13].



Burke, Gregory and Christine Davis. "Geoffrey Farmer: When the Wheel Turns, Why Does a Pot Emerge?"

Public. 38: Projects for a Small World. Toronto: Public Access, 2008. [13].



Burke, Gregory and Christine Davis. "Geoffrey Farmer: When the Wheel Turns, Why Does a Pot Emerge?"
Public. 38: Projects for a Small World. Toronto: Public Access, 2008. [13].